

# Importing Assay Definitions for Xpress Systems



### Trademark and Copyright Statements

Cepheid®, the Cepheid logo, GeneXpert® and Xpert® are trademarks of Cepheid.  
All other trademarks are the property of their respective owners.

**Copyright © Cepheid 2020. All rights reserved.**

### Disclaimers

All examples (printouts, graphics, displays, screens, etc.) are for information and illustration purposes only and shall not be used for clinical or maintenance evaluations. Data shown in sample printouts and screens do not reflect actual patient names or test results. Labels depicted in the manual may appear different from actual product labels. Cepheid makes no representations or warranties about the accuracy and reliability of the information contained in this document. The information was developed to be used by persons trained and knowledgeable in GeneXpert system operation or under the direct supervision of Cepheid technical support or service representatives. Updates to this document may be issued periodically.

# 1 Importing Assay Definitions

---

This document explains how to import assay definitions into the GeneXpert® Xpress System, both the Hub and Tablet configurations. To perform the procedure, use the assay definition CD provided inside the Cepheid GeneXpert assay kit.

## Important

**You must be logged in as an administrator to load assay definition files. Make sure to log in as an admin before proceeding with the steps below.**

---

## 1.1 Identifying Your GeneXpert Xpress System

This chapter is divided into two major sections. Select the appropriate section depending upon the configuration of the Xpress system you are using:

### Hub



### Tablet



- For the *Hub* configuration, see Section 1.2, Importing Assay Definition Files on GeneXpert Xpress System - Hub Configuration
- For the *Tablet* configuration, see Section 1.4, Importing Assay Definition Files on GeneXpert Xpress System - Tablet Configuration

## 1.2 Importing Assay Definition Files on GeneXpert Xpress System - Hub Configuration

### 1.3 Managing Assays

An assay definition contains a series of programmed steps that the GeneXpert Xpress system uses to perform sample preparation, amplification and detection procedures. In vitro diagnostic assay definition (.gxa/.nxa) files are included on the CD that is shipped with the assay kit and imported into the software as described in this section. Assay definitions that are no longer in use can also be deleted.

#### 1.3.1 Connecting a DVD Drive to the Xpress System

1. Plug the DVD drive in to one of the available USB ports on the rear of the hub (see Figure 1-1).

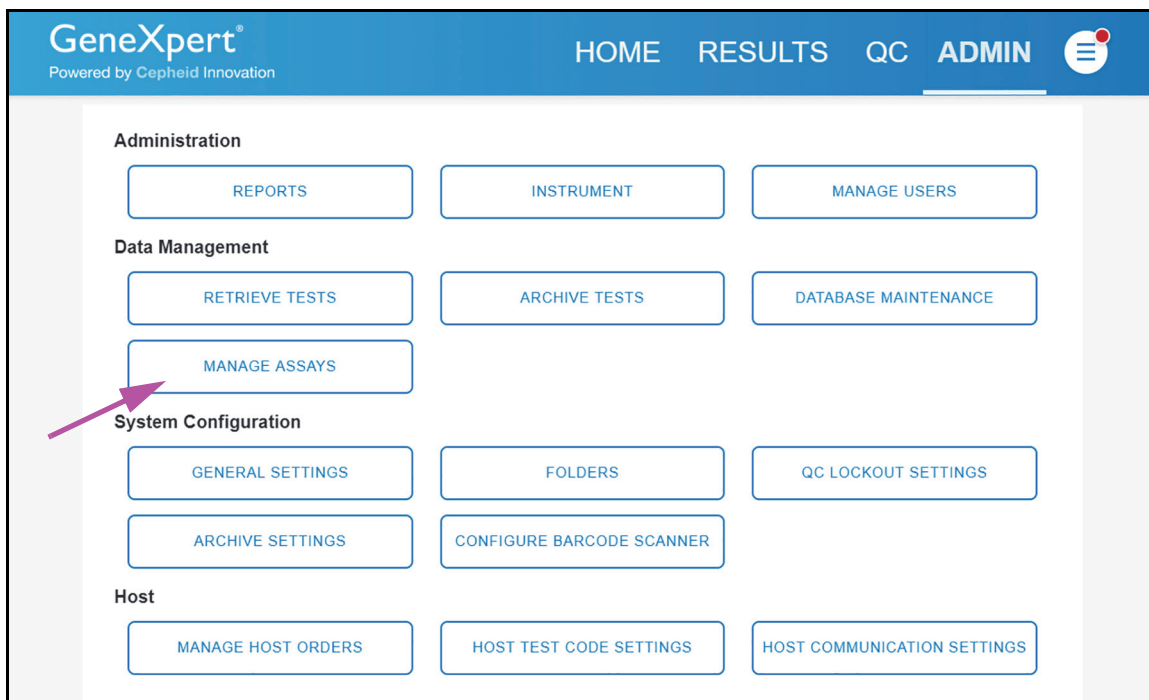


**Figure 1-1. DVD Drive**

2. Press the **Eject** button on the front of the DVD drive to open the door.
3. The CDROM is located in the assay kit. Insert the assay definitions CD into the DVD drive and close the DVD drive door. The green light on the front of the DVD drive will flash while the drive reads the CDROM.

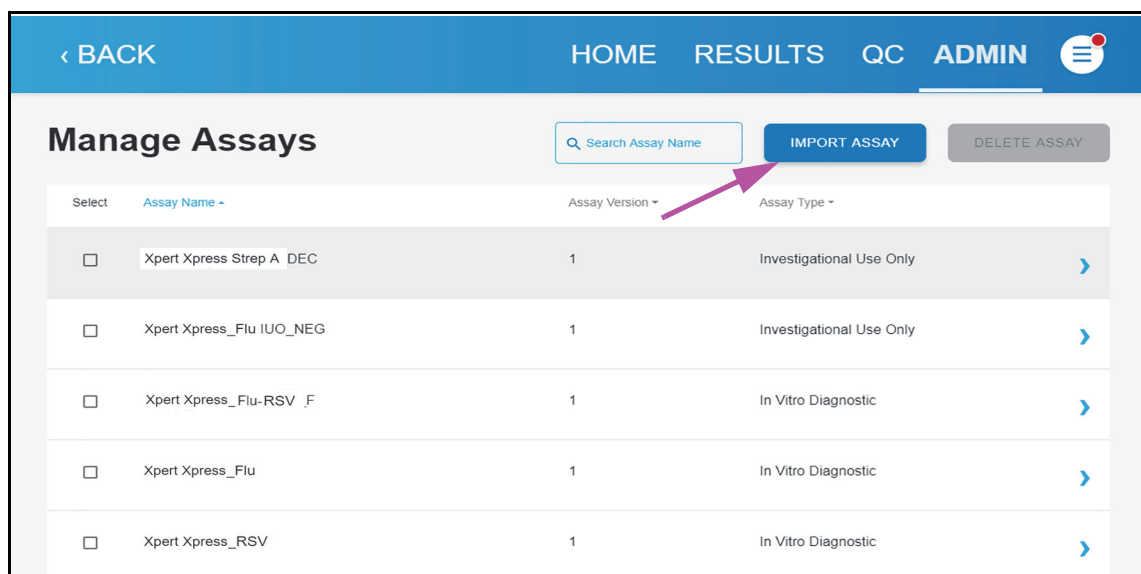
### 1.3.2 Importing Assay Definition

1. To import new assay definitions, ensure you are logged in as an admin, then touch the **MANAGE ASSAYS** button on the Admin screen (see Figure 1-2).



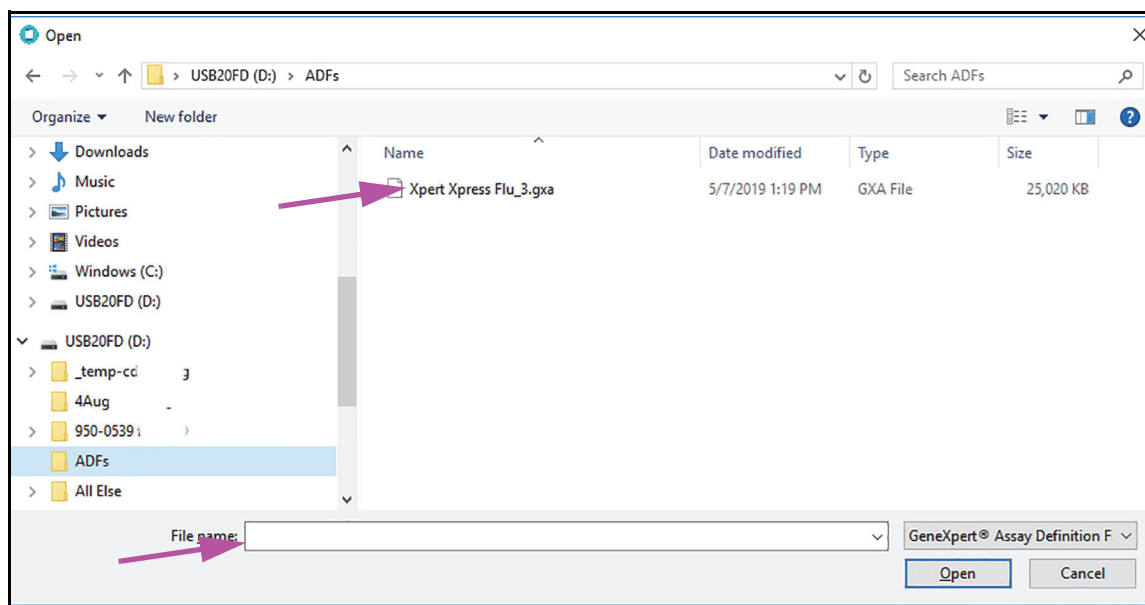
**Figure 1-2. Admin Screen**

2. The Manage Assays screen appears (see Figure 1-3). To import an assay into the system, touch the **IMPORT ASSAY** button.



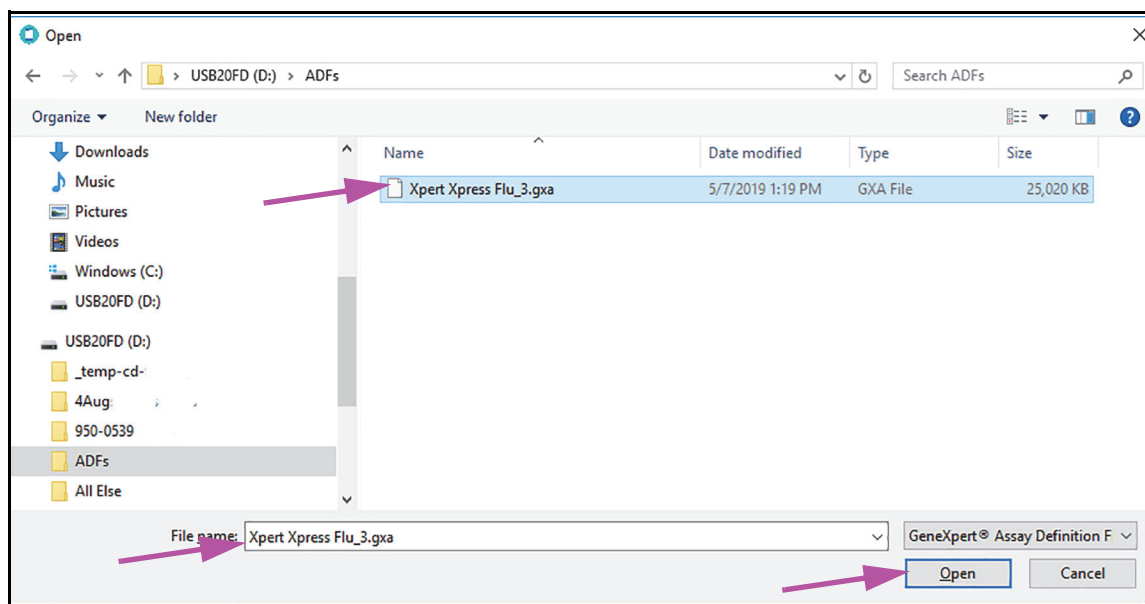
**Figure 1-3. Manage Assays Screen, showing the Import Assay Function**

3. Navigate to the DVD and to the folder containing ADF files. A screen appears where you will locate the assay definition file to be imported. Locate and touch the assay definition (.gxa/.nxa) file (see Figure 1-4). What is shown below is an example. Check the assay name and version number to make sure the correct assay definition is being imported.



**Figure 1-4. File Screen, showing the Assay File to be Imported - Original**

4. The assay name appears in the filename field (see Figure 1-5). Touch **Open** to import the file into the system.



**Figure 1-5. File Screen, showing the Assay File to be Imported**

5. The new assay name and version number appear in the Assay list.

6. If you need to import additional assay definition files from the same CD, repeat Step 2 through Step 4.

**Note**

---

For combination assays that have multiple .gxa/.nxa files, import only the assay definition files for assays that will be performed in your lab.

---

7. Remove the CD from the DVD drive and store the CD in a safe location in the event it is needed in the future.
8. Disconnect the DVD drive from the hub and store it and the cables to it in the event they are needed in the future.



## 1.4 Importing Assay Definition Files on GeneXpert Xpress System - Tablet Configuration

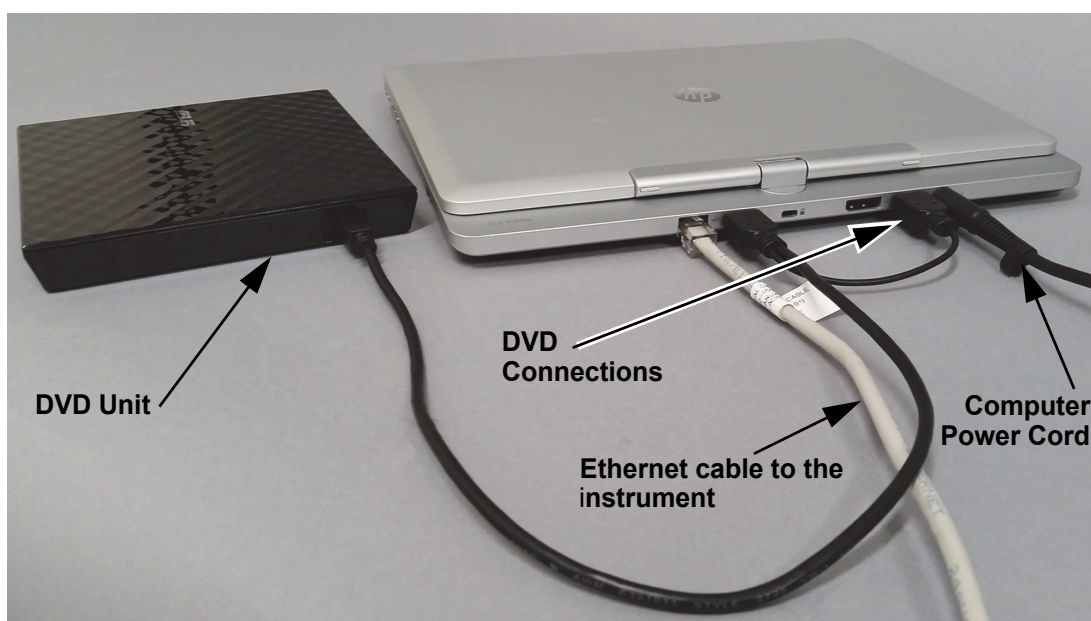
### 1.5 Managing Assays

An assay definition contains a series of programmed steps that the GeneXpert Xpress system uses to perform sample preparation, amplification and detection procedures. In vitro diagnostic assay definition (.gxa/.nxa) files are included on the CD that is shipped with the assay kit and imported into the software as described in this section. Assay definitions that are no longer in use can also be deleted.

#### 1.5.1 Connecting a DVD Drive to the Xpress System

Depending on the computer supplied with your system, the DVD drive is connected in one of two ways.

1. Locate the DVD drive. The DVD drive is shipped in the accessories box and is labeled as an item to save.
2. Plug the DVD drive in as shown. You will need to disconnect the scanner.



OR

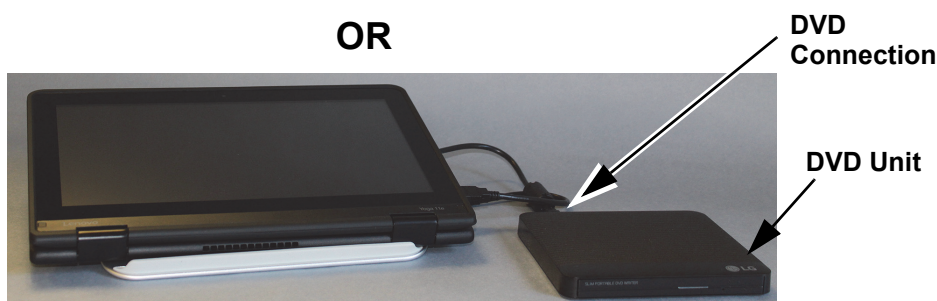


Figure 1-6. DVD Drive



3. Press the **Eject** button on the front of the DVD drive to open the door.
4. The CDROM is located in the assay kit. Insert the assay definitions CD into the DVD drive and close the DVD drive door. The green light on the front of the DVD drive will flash.

## 1.5.2 Importing Assay Definitions

1. Start the Gx Dx software. Ensure you are logged in as an admin.
2. In the GeneXpert Dx window, select **Define Assays** on the menu bar. The Define Assays window displays (see Figure 1-7).
3. Select **Import**. The Import Assay dialog box displays (see Figure 1-8).

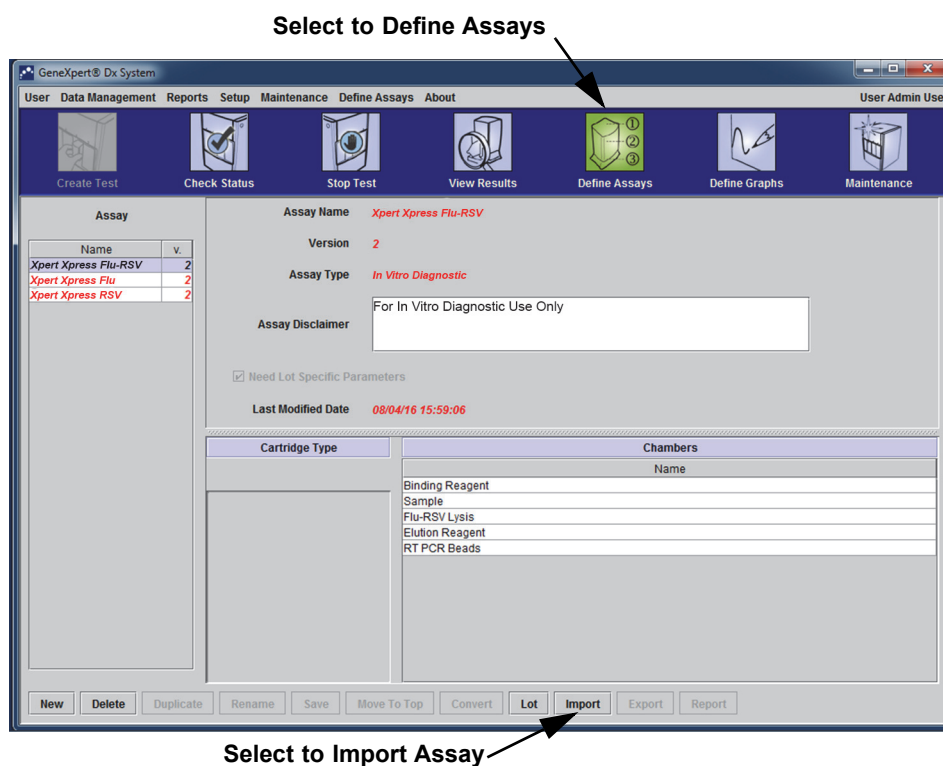
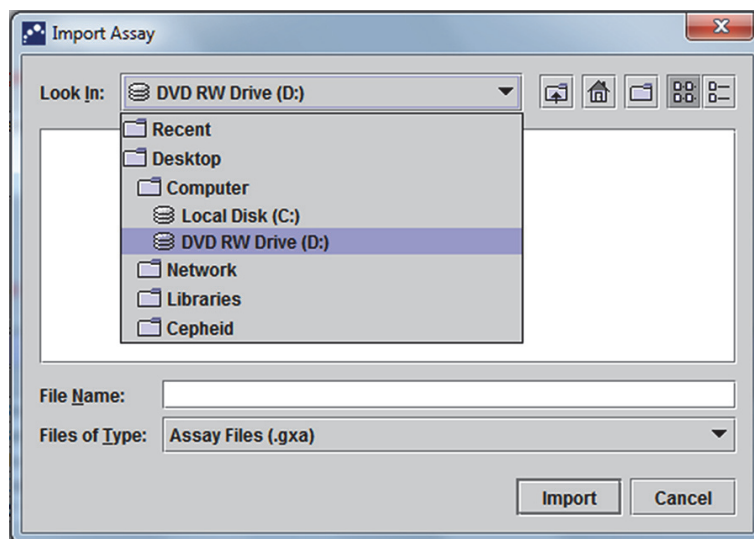


Figure 1-7. System - Define Assays Window (Admin User View)



**Figure 1-8. Import Assay Dialog Box**

4. Navigate to the DVD folder. Locate and select the assay definition (.gxa/.nxa) file, and then select **Import**. The new assay name and version number appear in the Assay list (on the left side of the window) and details about the assay appear to the right of the list.
5. Check the assay name and version number to make sure the correct assay definition has been imported.
6. If you need to import additional assay definition files from the same CD, repeat Step 2 through Step 5.

---

**Note**

For combination assays that have multiple .gxa/.nxa files, import only the assay definition files for assays that will be performed in your lab.

---

7. Remove the CD from the DVD drive and store the CD in a safe location in the event it is needed in the future.
8. Disconnect the DVD drive from the computer and store it and the cables to it in the event they are needed in the future.